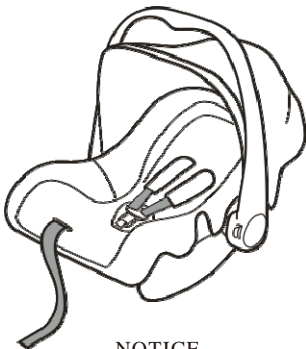


INSTRUCTIONS FOR USE

CHILD CAR SEAT GROUP 0+

SUITABLE FROM BIRTH – 15 MONTHS
SUITABLE FROM APPROXIMATELY 0 TO 13KGS



NOTICE

1. This is a “Universal” child car seat; it is approved to ECE Regulation 44.04 for general use in vehicles and will fit most vehicle seats.
2. The best fit is if the vehicle manufacturer has declared in the vehicle handbook that the vehicle is capable of accepting this “Universal” child restraint for this group.
3. This child restraint has been declared “Universal” under more strict conditions than those applied to earlier designs which do not carry this notice.
4. If you are in doubt, please consult either the child restraint manufacturer or the retailer.

Only suitable if the vehicle is fitted with 3- point static, 3-point retractor safety belts, approved to UN/ECE Regulation No. 16 or other equivalent standards.

WARNING

DO NOT place rear-facing child seat on front seats with airbags.

Contents

NOTES	2
SAFETY WARNINGS	3
PARTS AND INTERIOR EQUIPMENT	4
ADJUSTING THE SHOULDER HEIGHT	5
THE ADJUSTMENT AND USE OF HARNESS.....	5
SECURING THE INFANT CARRIER	6
SNAPPED THE HANDLE	8
CANOPY ASSEMBLY	9
MAINTAIN AND CARE OF YOUR PRODUCT	9

NOTES

1. Please read through these instructions carefully before using the baby car seat for the first time. The instructions can be retained on the baby car seat for reference in its life period.

Applicability:

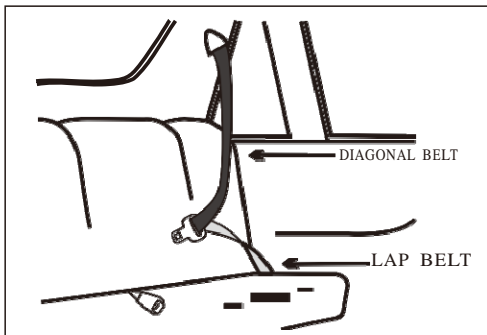
The baby car seat is suitable for weight categories 0+, (No older than approx. 15 months).



WARNING

DO NOT place rear-facing child seat on front seats with airbags.

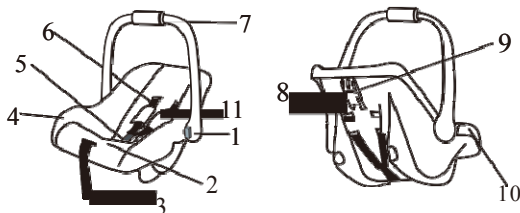
2. Your child seat can only be installed rearward facing (in the direction opposite the one in which you are travelling) with a lap and diagonal seat belt passenger seats.



SAFETY WARNINGS

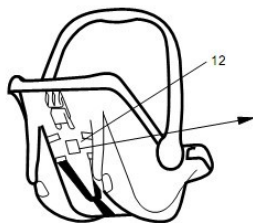
1. The instructions can be retained on the baby car seat for its life period in the case of built-in restraints,
2. This baby car seat can only be installed using a three-point vehicle belt.
3. Do not use this child restraint on a passenger seat equipped with an airbag under any circumstances.
4. Do not leave your baby unattended in the seat at any time.
5. Vehicle rear seat installation baby basket is the most secure position for the baby car seat.
6. Do not use the child seat without fastening the child's harness correctly, and never use it without fastening it into the car as following these fitting instructions. Before each journey, check whether the baby car seat is installed firmly.
7. Do not modify this product in any way. Not to use any load bearing contact points other than those described in the instructions and marked in the child car seat.
8. The handle of the baby car seat has to be against the back of the vehicle seat. If necessary, adjust the head rest of the vehicle seat.
9. The baby car seat must not be used without the cover. And the seat cover should not be replaced with any other than the one recommended by the manufacturer.
10. Protect the baby car seat system against direct sunlight otherwise the high temperature will hurt your child.
11. Ensure that all parts are locked in place correctly and not pinned in the adjustable seats or doors.
12. Luggage and other heavy objects should be putted safely in the car. Loose objects are liable to cause injury in the event of an accident.
13. Never use the seat as a shopping bag or as a means for transporting something.
14. Periodically inspect the harness, pay particular attention to attachment points, stitching and adjusting devices
15. When the child seat is not used, it is fastened into the car with a seat belt to avoid it being thrown out of the car in an accident.
16. In the event of an emergency, it is important to release the child quickly. This means that the buckle is not fully tamperproof and therefore your child should be persuaded never to play with the buckle.
17. Do not continue to use the baby car seat if parts have become damaged or have loosened after an accident.
18. After accident, the child car seat should be changed.

PARTS AND INTERIOR EQUIPMENT



1 parts drawing

1	Red Button Handle Adjuster	7	Carry Handle
2	Harness Adjuster under "Press"	8	Shoulder Harness Slots
3	Harness Adjuster Strap	9	Diagonal Belt Guide
4	Cover	10	Light Blue Lap Belt
5	Harness Buckle	11	Chest pad
6	Shoulder Straps	12	ECE-mark



CHILD CAR SEAT
ECER44/04
UNIVERSAL

GR 0+
0-13Kg

E₄

044327

ADJUSTING THE SHOULDER HEIGHT

The harness has 2 positions. The straps should go into the slots at, or the nearest slots above the height of the child's shoulders. Remove straps by passing them through the slots from the front to the back of the seat to adjust the harness: re-route the straps through the appropriate slots.



THE ADJUSTMENT AND USE OF HARNESS

If the height of your shoulder belts in child car seat is not fit for your child, Adjust the height of the shoulder belts, please proceed as follows:



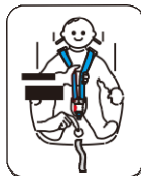
Step 1: loosen the shoulder harness (see point Below).

Step 2: Pull out the buckle tongues from the chest pad and the slots on the cover and the shell, then thread them into the corresponding belt slots.

Ensure that both of the shoulder belts go through slots at the same height, and not twisted.

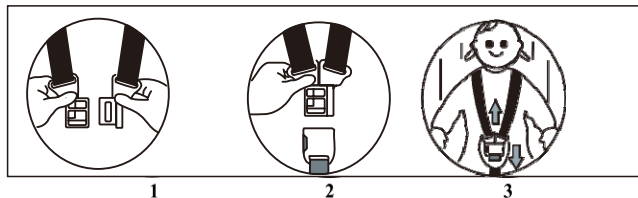
1. Loosening the shoulder straps

Step1. The shoulder straps are slacked by pressing the lever (under the seat cover) on the front of the seat.



Step2. Press down on the label marked “Press” as you grip the two shoulder straps with your other hand. Pull the shoulder straps towards you to loosen it.

2.Securing the baby with the harness



Firstly, adjust the shoulder straps height(see point ADJUSTING THE SHOULDER HEIGHT), proceed as follows:

Step 1.Loosen the harness (see point above),open the buckle, and place them down side ways. Seat your child in the child car seat. Place both shoulder straps over your child's shoulders. Step 2.Put the two metal sections of the buckle connectors together (fig. 1), Slot the two buckle connectors into the slot in the top of the buckle until they "click" into place(fig. 2)

Check the harness is correctly locked by pulling the shoulder straps upwards(fig. 3).

3.Tighten the shoulder harness



Pull the shoulder straps upwards to remove the whole harness then pull the adjuster strap until the harness is fully tightened(fig. left).

The harness should be adjusted as tightly as possible without causing discomfort to your child.

To release the harness (see point ADJUSTING THE SHOULDER HEIGHT),press the red button on the buckle downwards.

SECURING THE INFANT CARRIER

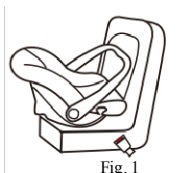
Please read the operating handbook in your vehicle to inform yourself about the basics concerning children's seats in vehicles.

DO NOT place this baby seat on seats with front airbags.

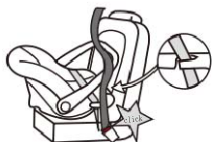
This baby car seat can only be installed using a three-point vehicle belt.

The baby car seat must be Installed rearwards facing(in the direction opposite the one in

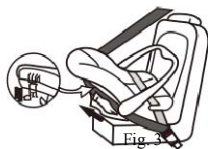
fig 1 which you are traveling)



Step 1. Adjust the handle to the forward position (Fig. 1). Put the seat in car's seat. Handle must be firmly against the backrest of car's seat



Step 2. Slide the lap belt of the Vehicle's 3-point seatbelt through both Lap belt guides. Let the tongue plate snap in the belt lock with a clearly audible "click". Pull the shoulder belt in narrow direction to tighten the lap belt. Check to make sure the tongue plate is locked by pulling on the belt(Fig. 2).



Step 3. Place the diagonal belt in the diagonal belt guide at the back of the seat(Fig. 3)



Step 4. Tighten the vehicle's own 3-point seatbelt by pulling hard on the positions showed in fig. 3 and fig. 4.



Step 5. The satisfactory position of the adult safety-belt buckle car seat relative to the child is as the Fig 5. You can contact the child car seat manufacturer if in doubt about this point.

Make sure all the belts` position is right and they has not become twisted. Also check that the cover is not impeding the movement or fit of the belt webbing in any way.

To release your baby car seat following the above instructions in reverse order.

SNAPPED THE HANDLE



The handle for the baby car seat can be snapped into 4 stable positions . To adjust the handle, please press the red button of handle on both side at the same time. now it can be rotated .



1



2



3



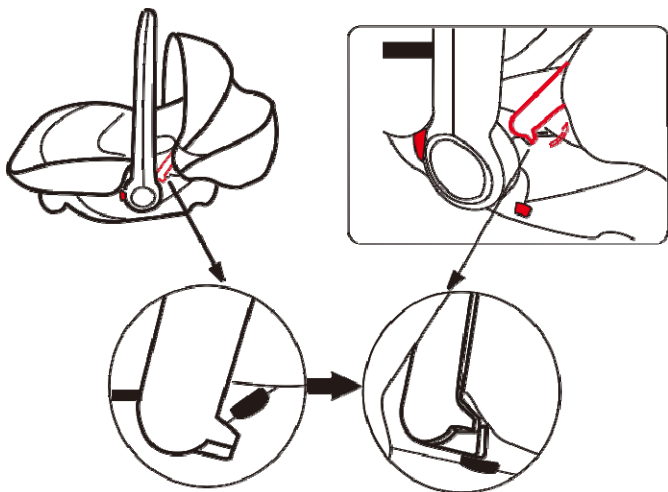
4

The carry handle has four positions:

1. Forward facing Installed in the car. This position(only this position)is suitable for the baby car seat installed on the vehicle seat.
2. Straight up for carrying
3. Handle clicked back to initiate the rocking feature
4. Down to support baby for feeding and play

Ensure that the handle is locked in a position, the harness is correctly fitted and the buckle fastened before carrying your car seat.

CANOPY USE



Depend on the elastic deformation, Insert keys on both ends of canopy frame can be up-down adjusted. When you heard the “click”, the side of canopy frame should be located.

MAINTAIN AND CARE OF YOUR PRODUCT

REMOVE (CLEAN) THE COVER

The cover can be easily removed for washing. Remove harness by pressing the harness and loose the shoulder straps to release buckles; then remove the cover to wash in warm water.

Follow reverse of the above to replace the cover.

CLEANING THE CAR SEAT

The harness and plastic parts can be washed with very mild detergent and warm water. Do not use chemical cleansers, bleach or corrosives to wash any part of the car seat.