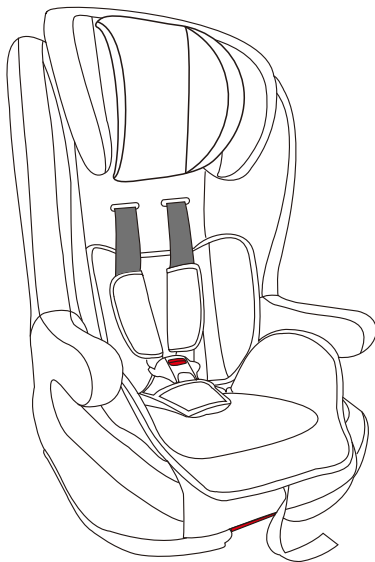


# Baby safety car seat

Type : BFL102A

Group I: 9-18KG, ISOFIX, Universal

Group II III: 15-36KG, Universal



## NOTICE

1. This is an ISOFIX CHILD RESTRAINT SYSTEM. It is approved to Regulation No.44,04 series of amendments for general use in vehicles fitted with ISOFIX anchorages systems.
2. It will fit vehicles with positions approved as ISOFIX positions(as detailed in the vehicle handbook),depending on the category of the child seat and of the fixture.
3. The mass group and the ISOFIX size class for which this device is intended is:Group 1(9-18KG),B1
4. If you are not sure , please check the child restraint manufacturer or retailer.

## NOTICE

- 1) This is a "universal " child restraint s. It is approved to Regulation No. 44 ,04 series of amendments,for general use in vehicles and it will fit most,but not all,car seats.
- 2) A correct fit is likely if the vehicle manufacturer has declared in the vehicle handbook that the vehicle is capable of accepting a “Universal” child restraint for this age group.
- 3)This child restraint has been classified as “Universal” under more stringent conditions than those which applied to earlier designs which do not carry this notice.
- 4) If in doubt,consult either the child restraint manufacturer or the retailer.

Only suitable use in the listed vehicles fitted with lap /3 point/~~static~~ /with retractor safety-belts,approved to ECE Regulation No.16 or other equivalent standards.

# Directory

0. Warning.....	4
1. Structural of child seat.....	5
2. Feature of child seat.....	7
3. Installation location and adjustment of child seat.....	6-11
4. Installation methods of child seat.....	11-13
5. Removing and fitting of seat cover.....	13
6. Daily Care and Maintenance.....	13
7. Warranty.....	14

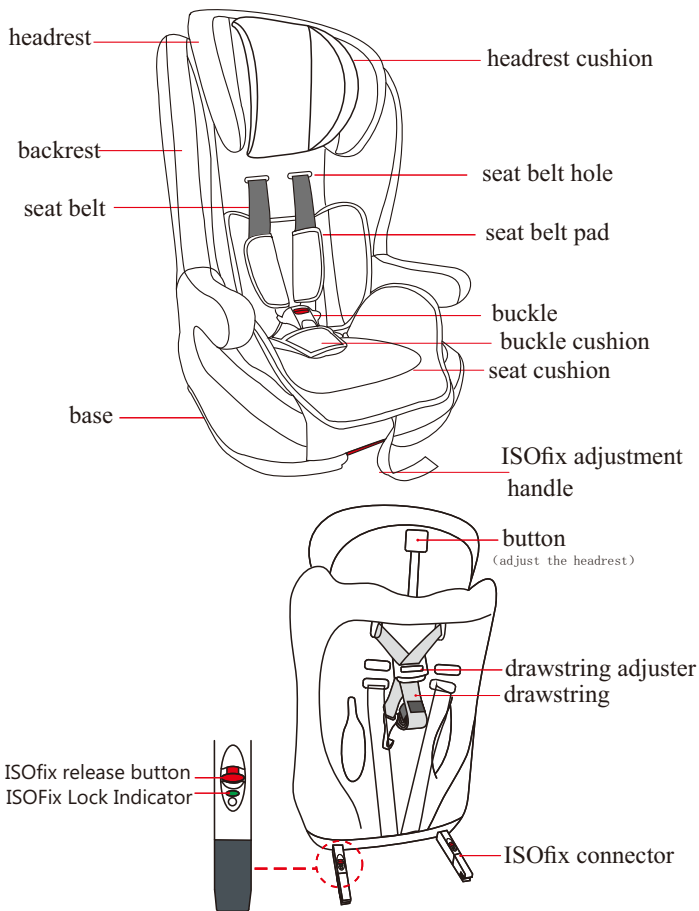


## Warning

For your child's safety, Please read the instructions carefully below. Carelessness or improper operations may cause danger that should be avoided.

1. Please read the car manufacturer's handbook during use of child restraint system with ISOFIX.
2. The instruction can be kept in the reserved place of the child seat within the usage period.
3. Do not use this child seat in home. It isn't designed for home use and should only be used in your car.
4. Be sure that children are not left in their child restraint system unattended.
5. The child restraint system should be changed when it has been subject to violent stresses in an accident.
6. Any straps holding the restraint to the vehicle should be tight; Restraining the child should be adjusted to the child's body, and should not be twisted.
7. Any lap strap should be worn low down, so that the pelvis is firmly engaged, shall be stressed.
8. Be sure any luggage or other objects liable to cause injuries in the event of a collision shall be properly secured.
9. The rigid items and plastic parts of a child restraint shall be so located and installed that they are not liable, during everyday use of the vehicle, to become trapped by a movable seat or in a door of the vehicle.
10. It is danger to make any alterations or additions to the device without the approval of the Type Approval Authority, and it is also danger not following closely the installation instructions.
11. It is extremely dangerous to use any load bearing contact points other than those described in the instructions and marked in the child restraint.
12. The child restraint shall not be used without the cover; The seat cover should not be replaced with any other than the one recommended by the manufacturer.
13. The child should be taken out from the car seat when it is being moved or adjusted.(except adjusting the headrest)
14. Please do not buy a second hand safety car seat. Because you may not know the using history of the child seat. It may have been in an accident or lack some parts.

# 1. Structural of child seat



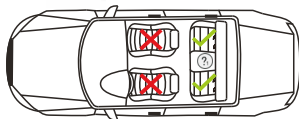
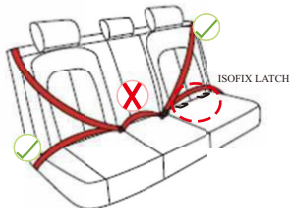
## 2. Feature of child seat

- 1) The child seat is equipped with an ISOFIX which can be adjusted by hands. It is more convenient and safer to fix child seat in vehicle with ISOFIX connectors.
- 2) The child seat has several using positions of headrest.
- 3) The installation with ISOFIX system is used for group I of child seat.
- 4) The installation with three-point safety belt is used for group II/III.

## 3. Installation location and adjustment of child seat

### 3.1 Right fitting position in car

✓ right fitting      ✗ wrong fitting



Group I: This group of child seat only can be used in the car with ISOFIX anchorages points which fulfill the requirements of ECE R16.

Group II/III: This group of child seat can be used in the seat with three point safety belt which fulfills the requirements of ECE R16; it can't be used in the seat with two point safety belt.



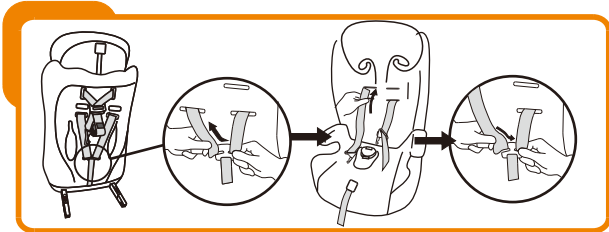
The child seat should be used in the second row of forward facing seat.

### 3.2 Correct height of shoulder straps



Always check that the shoulder straps are at the correct height for your child. The child's shoulder should always be below the slot for the harness straps. (The right fitting is described in the picture above.)

### 3.3 Tighten the harness restraint

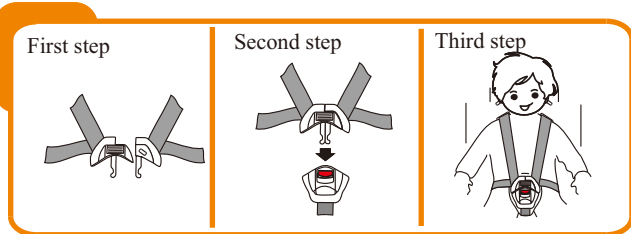


Step 1: Pull out the metal clip in the backside slot, turn it to line with the strap, then pull the strap out from front side; then re-place the strap through the proper slot.

Step 2: Repeat the same process for the other strap.

Step 3: Place both of the metal clips into the backside slot; make sure both of the straps are at the same height.

### 3.4 Operation of buckle



1. Put both side of the buckle clip together.

2. Put the metal plates into the buckle as the picture shows. when hear a click, it shows it fits well. pull the metal to check whether the buckle is fitting correct.

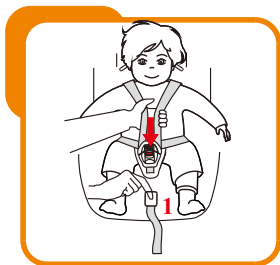
3. If need to release the straps, press the red button, The clip will be released.

### 3.5 Adjust the harness straps



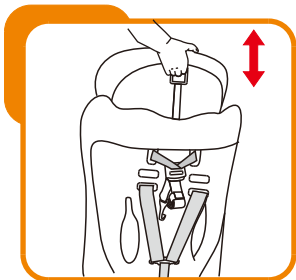
Pull the adjustment straps until the harness straps are totally tight. The shoulder restraint shall be adjusted as tightly as possible without causing discomfort to your child. Check whether the straps are adjusted tightly enough and not twisted when the child is placed in the seat. Be sure the distance between the shoulder straps and shoulder is less than 1 cm. The lab strap shall be worn low down, so that the pelvis is firmly engaged. The loose straps are very dangerous for the child.

### 3.6 Loosen the harness restraint



Find the right position of harness strap adjuster. (See position 1 as showed in the left picture)  
Keep pressing down the harness straps adjuster by one hand, meanwhile grip two shoulder straps and pull them towards you by the other hand. With the operation mentioned above, you can loosen the harness restraint and adjust as you required.

### 3.7 Adjust the height of the headrest

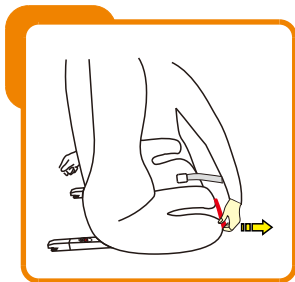


The head rest can be adjusted at 5 positions according to the height of your child. You can adjust the head rest by keeping pressing the button on the head rest and moving up or down. When the head rest is locked safely at one position, you will hear a clear “Click”.



As the picture shows. First put one harness strap through the proper slot of the car seat to the back, the other harness strap do the same way. Make sure the height of the straps are the same.

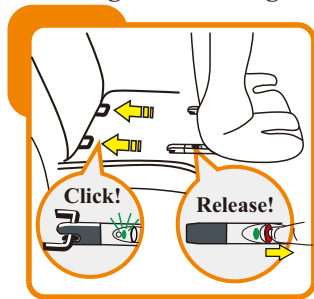
### 3. 8 Adjust the ISOFIX connector



Pull out the ISOFIX adjustment handle under the front part of child seat base by one hand, meanwhile pull out the ISOFIX connectors by the other hand.

If you want to push back the ISOFIX connectors, repeat the process in reverse.

### 3.9 Fitting and releasing of ISOFIX connectors



Fitting of ISOFIX connectors:  
Step 1: Pull out the two ISOFIX connectors to maximum extension position as described in operation of 3.8.

Step 2: Connect to the ISOFIX lower anchorage points in car, when you hear a clear “Click”, the ISOFIX connectors are locked safely, meanwhile the ISOFIX lock indicator window becomes green.

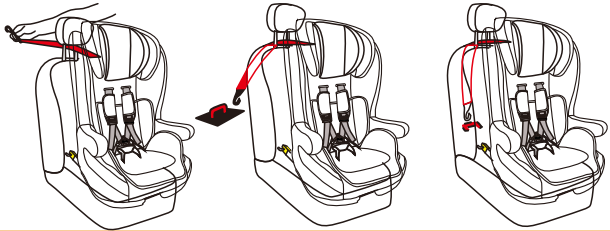
Step 3: Pull out the ISOFIX adjustment handle by one hand, meanwhile push the child seat towards the car seat's back hardy until it is totally tight.

Releasing of ISOFIX connectors:

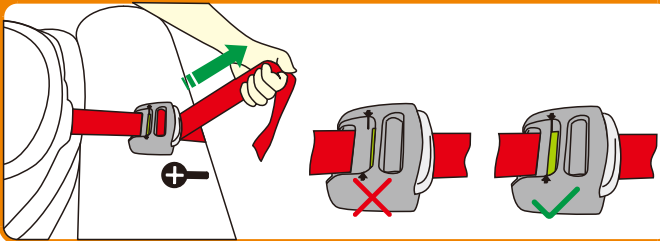
Step 1: Keep pulling out the ISOFIX adjustment handle by one hand, meanwhile move out the child seat in order that you have enough space to press the ISOFIX release button.

Step 2: Press the ISOFIX release button.

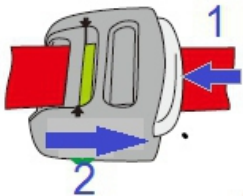
### 3. 10 Fitting and releasing of top tether



Step 1: Attach the top tether connector which is located in the middle of headrest of child seat to the corresponding hook.(refer to the manual of car manufacturer for detail information regarding the location of top tether connecting hook)



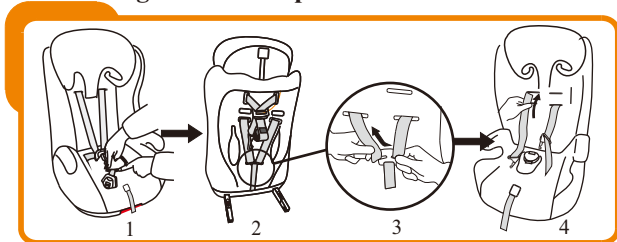
Step 2: Tighten the top tether until the indicator window turns green, and make sure the top tether is tight enough.If you want to release the top tether:



Step 1: Keep pressing the white button of top tether strap adjuster and move the adjuster on the opposite direction to loosen the top tether strap.

Step 2: Open the top tether connector, then the top tether will be released.

### 3.11 Removing harness straps and buckle



Step 1: Firstly, open the buckle. Secondly, remove the buckle cushion and seat cushion. Finally, take out the buckle from the slot under the base of the child seat.

Step 2\*: Find the right place for the metal hook connecting with harness strap.

Step 3\*: Take one strap out from the metal hook, and pull it out from the slot.

Step 4: Repeat the same operation for the other strap, and take out the straps from the slot under the base of child seat. If you want to reassemble the harness straps, repeat the processed mentioned above in reverse.

\*Remark: for Variant BFL102B, Step 2, 3 means take off the backside metal clips through the slot.

Notice: Keep the harness with all parts in a safe place for future use.

## 4. Installation methods of child seat

### 4.1 Group I (9-18KGS), installed with ISOFIX system:



Installation of child seat:

Step 1: Adjust child seat to the correct status following the operations of 3.2, 3.3 and 3.7.

Step 2: Fix the ISOFIX system in the car seat following the operations of 3.8, 3.9 and 3.10.

Step 3: Open the buckle following operation of 3.4, then place your child into child seat and fastened the buckle following the operation of 3.4.

Step 4: Adjust the height of head rest following operation of 3.7.

Step 5: Tighten the harness restraint following operation of 3.5.

Notice: Child seat for group I shall be used with headrest and seat cushion.

If you want to release the child seat:

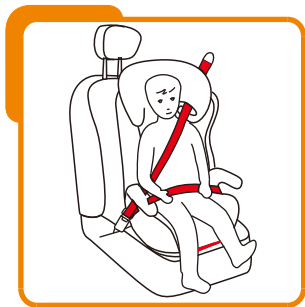
Step 1: Loosen the harness restraint following operation of 3.6.

Step 2: Open the buckle and take your child out of child seat.

Step 3: Releasing top tether following operation of 3.10.

Step 4: Releasing ISOFIX connectors following operation of 3.9.

## 4.2 Group II and III (15-36KGS), installed with three point safety belt



Step 1: Remove the harness straps and buckle following the operation of 3.11.

Step 2: Take off the headrest cushion and seat cushion.

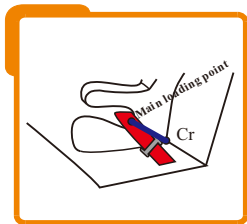
Step 3: Place the child seat on car seat, and make sure that the backrest of child seat should be firmly pressed against car seat.

Step 4: Place your child in the child seat.

Step 5: Adjust the height of head rest following operation of 3.7.

Step 6: Place the diagonal belt through the guide hook on the head rest, and then place the lap belt through the two guide hooks under arm rest of child seat. Step 7: Fasten the buckle of car seat until you hear a clear “Click”. Check whether the buckle is locked safely by pulling the shoulder straps upwards. Step 8: Tighten the vehicle seat belt by pulling on the diagonal section, and remove the slack of seat belt to the retractor.

## 4.3 Main loading point



Be sure the distance between main loading and Cr must be more than 150 mm. Please contact the child restraint manufacturer if in doubt about this point.

If you want to release the child seat:

Step 1: Open the buckle of vehicle seat belt.

Step 2: Take out the vehicle seat belt from the guide hooks of child seat.

Notice: Child seat for group II/III shall be used without headrest cushion and seat cushion.

## 5. Removing and fitting of seat cover

1. Open the buckle of child seat.
2. Remove harness straps and buckle following operation of 3.11.
3. Take off the headrest cushion and seat cushion.
4. Open the buttons on the backrest, and then take off the cover.

## 6. Daily Care and Maintenance

1. In the daily using, you need to check the wear and tear situation of the child seat.
2. The child seat should be kept in a dry, ventilated and cool place when it is not used.
3. If the child seat is dirty, you can use the wet sponge to clean the Y-shaped straps, buckle or cover.
4. Washing instructions are listed as below:



Hand washing,  
below 30  
degrees



do not  
bleach



dry clean any  
solvent except  
trichloroethylene



Do not  
tumble dry



Do not  
iron

## **7. Warranty**

1. The warranty period starts from the date of purchase and is valid for a period of 12 months.
2. The manufacturer is not liable for any damages other than those on products supplied.
3. The following conditions are the warranty exceptions:
  - 3.1. The device is not used in accordance with the instruction manual.
  - 3.2. Users make alterations or demolition.
  - 3.3. Use after accident.
  - 3.4. Damage due to unexpected disasters, such as fire, floods, etc..